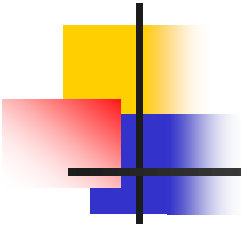




---

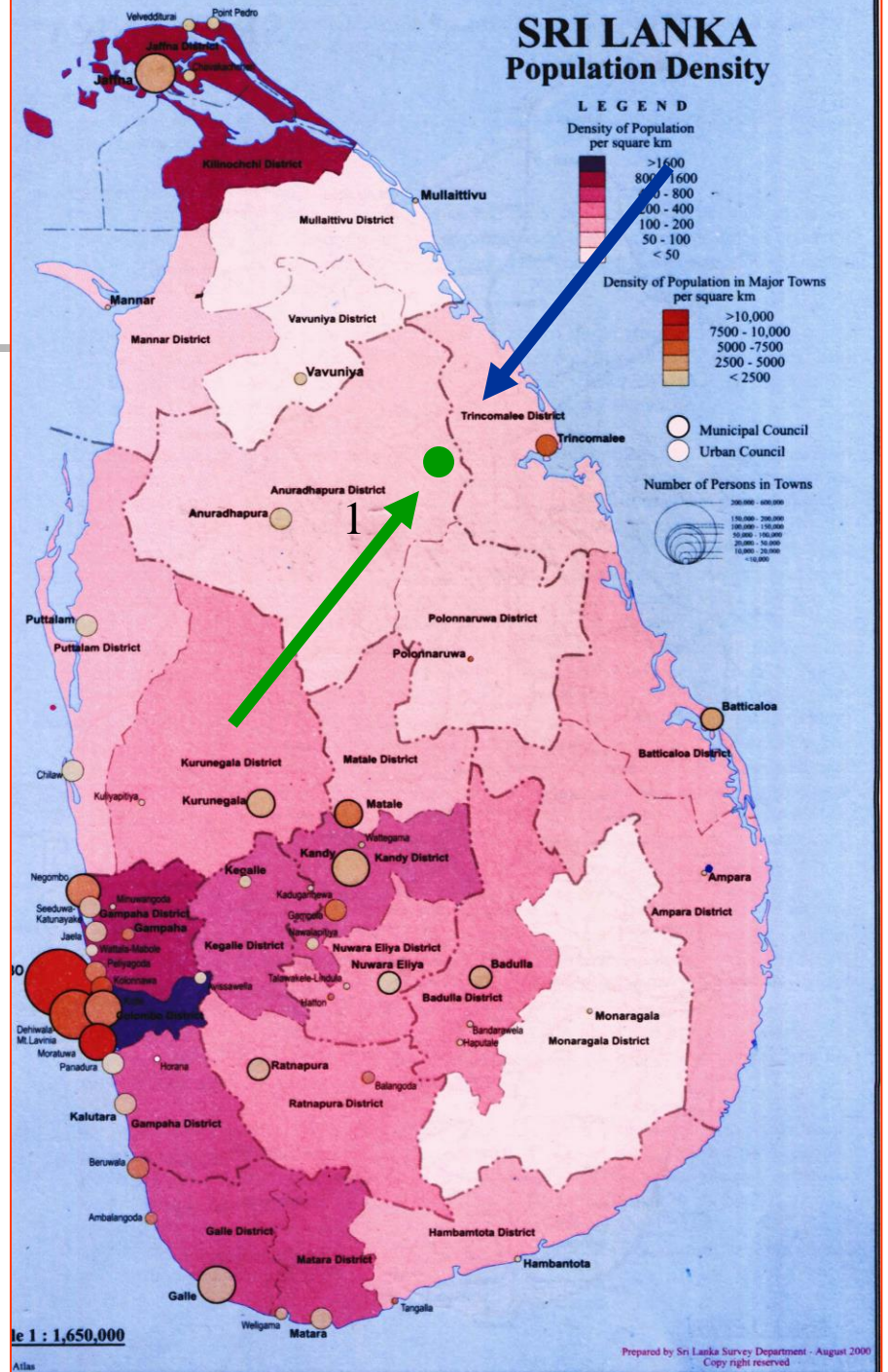
WET DEPOSITION MONITORING STATUS  
OF  
**DUTUWEWA**  
**MONITORING SITE**  
**SRI LANKA**



**SOUTH- WEST (MAY-SEP)**

**NORTH-EAST (DEC- FEB)**

**SITE LOCATION**  
**GALENBINDUNUWEWA**  
**Dutuwewa**





# ***Wet deposition monitoring at Dutuwewa -Sri Lanka***

---

- Monitoring methodology
  - 1. Wet only collector
  - 2. Bulk collector



# Wet Deposition Monitoring at Dutuwewa



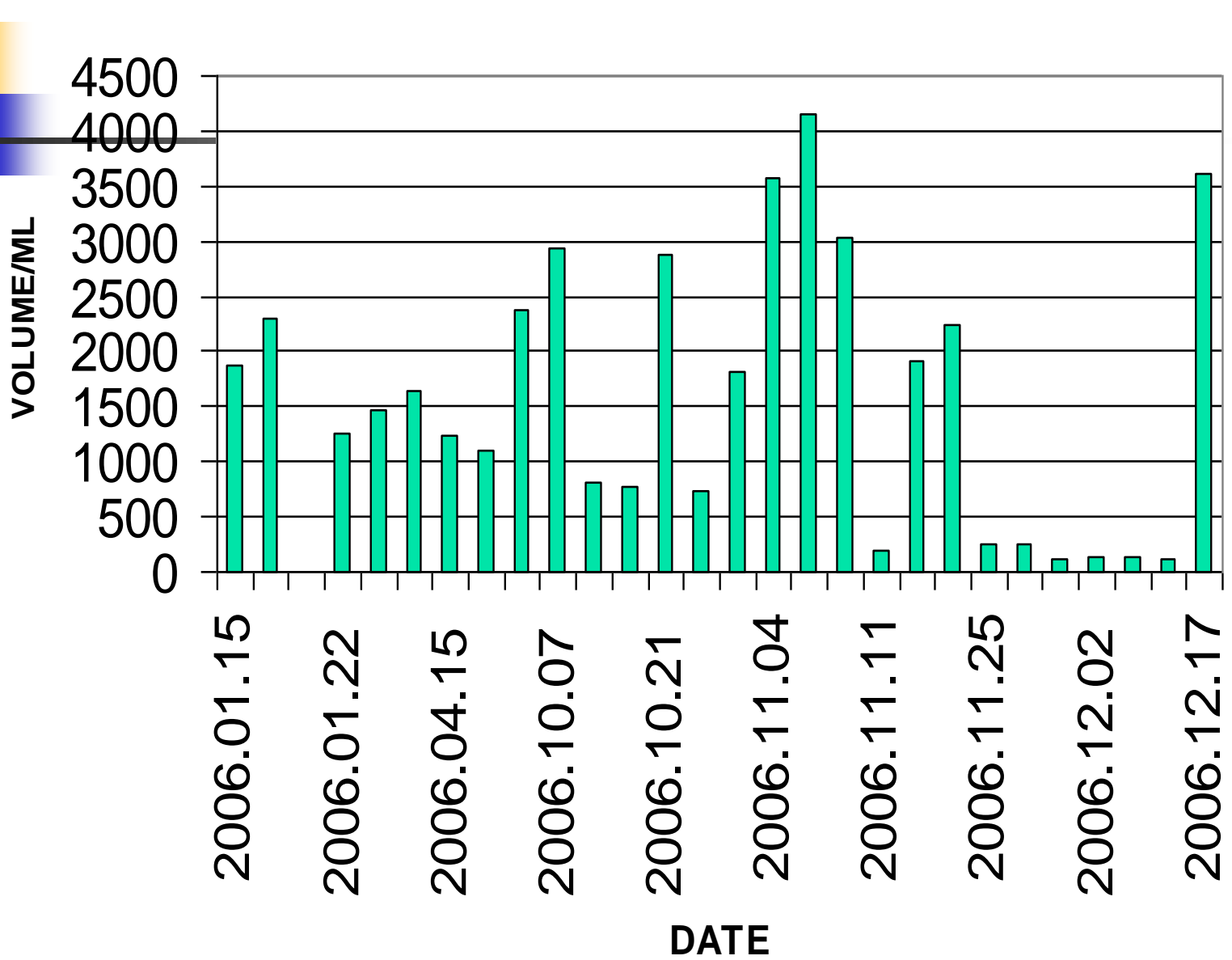


## ***ANALYTICAL METHODOLOGY***

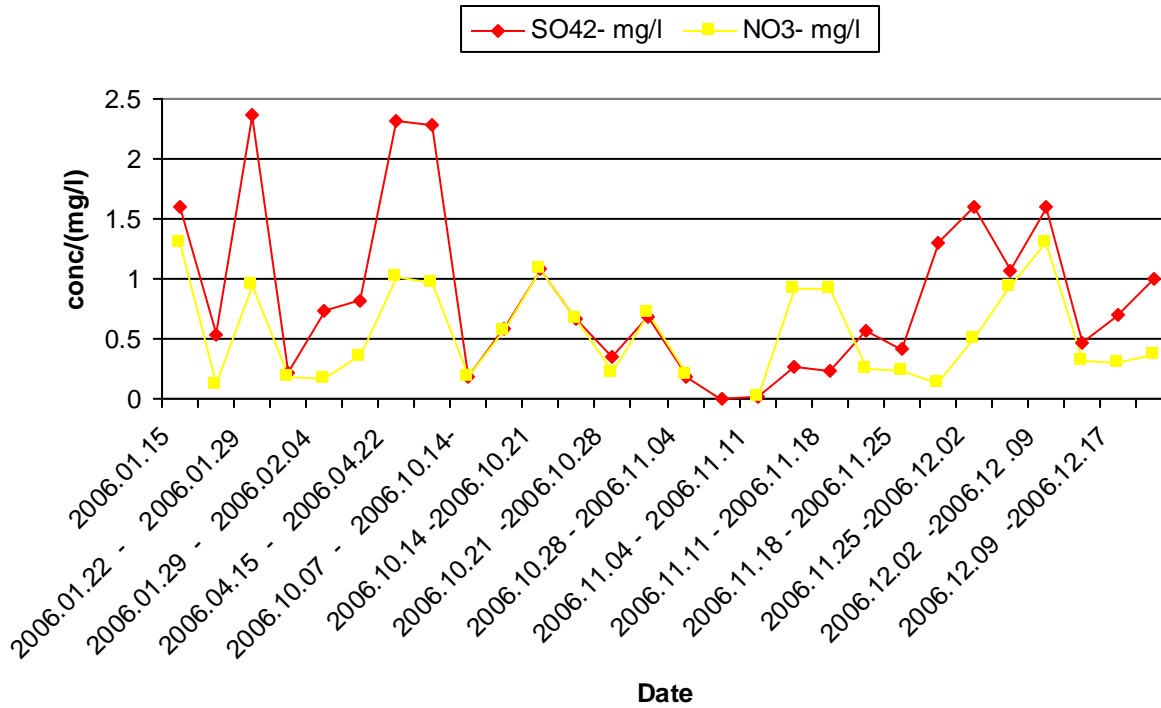
---

- Anions are analyzed by using Ion Chromatography using anion columns
- Mono-valent metal Cations and ammonium are also analyzed by ion Chromatography (Cation Columns)
- Divalent cations (Ca and Mg ) are analyzed by Atomic Absorption spectrophotometer (emission analysis on standard addition)

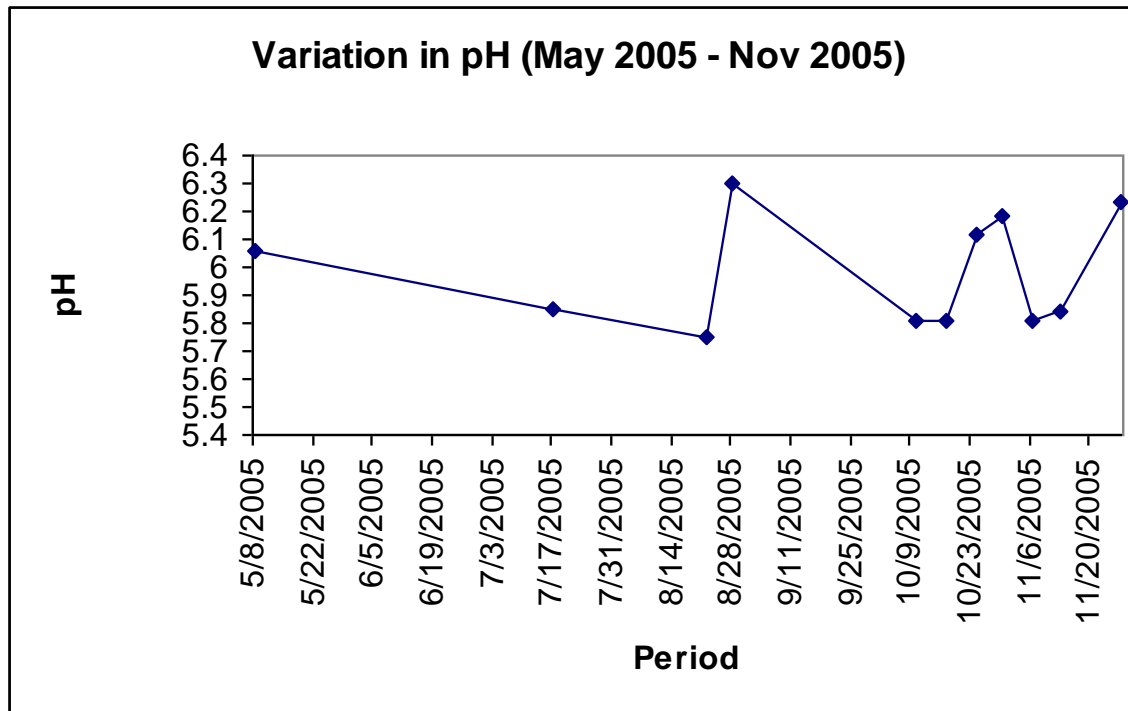
# RAIN WATER VOLUMES



# VARIATION IN SULFATE AND NITRATE CONCENTRATIONS IN 2006

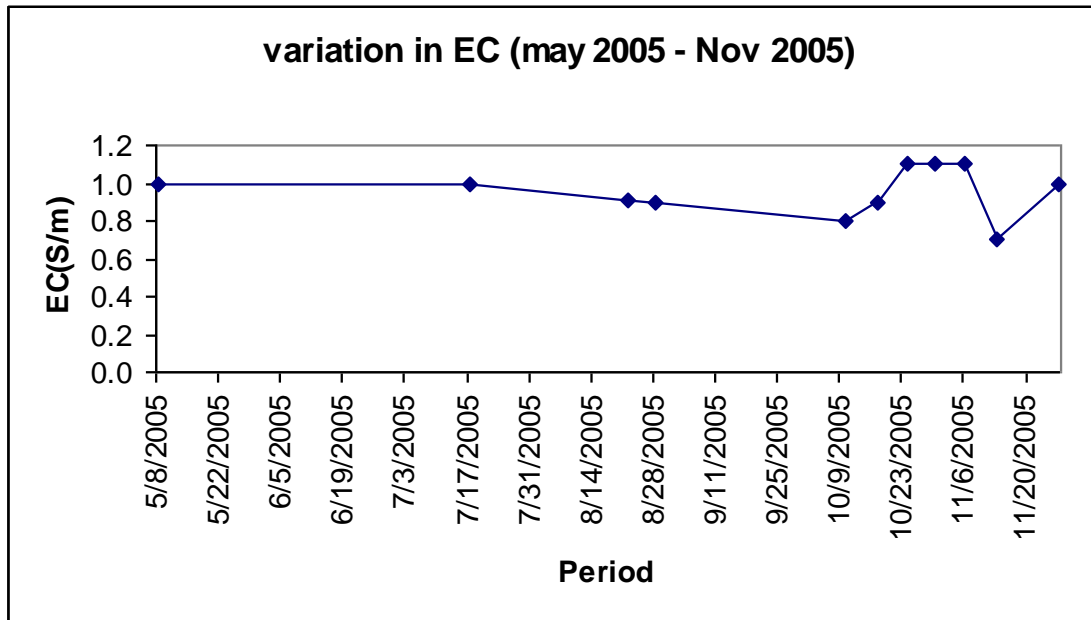


# VARIATION OF PH MEASUREMENT(BULK)

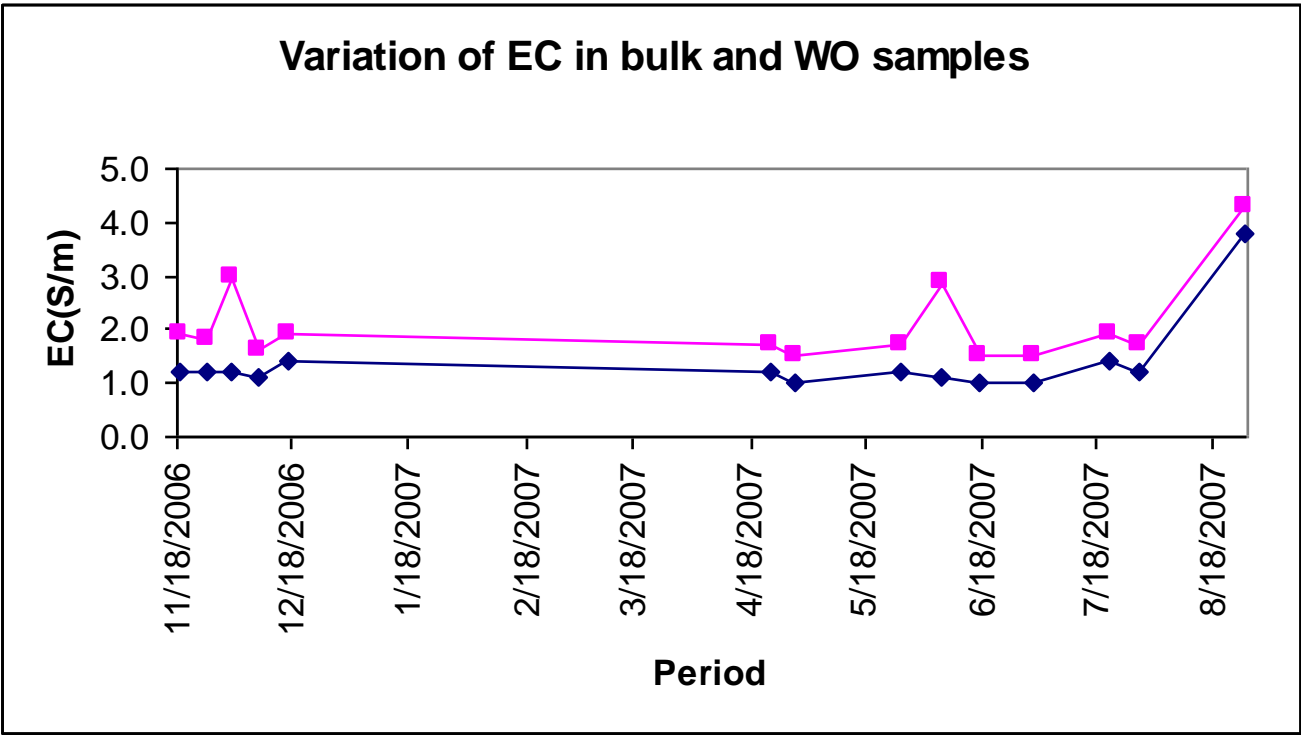




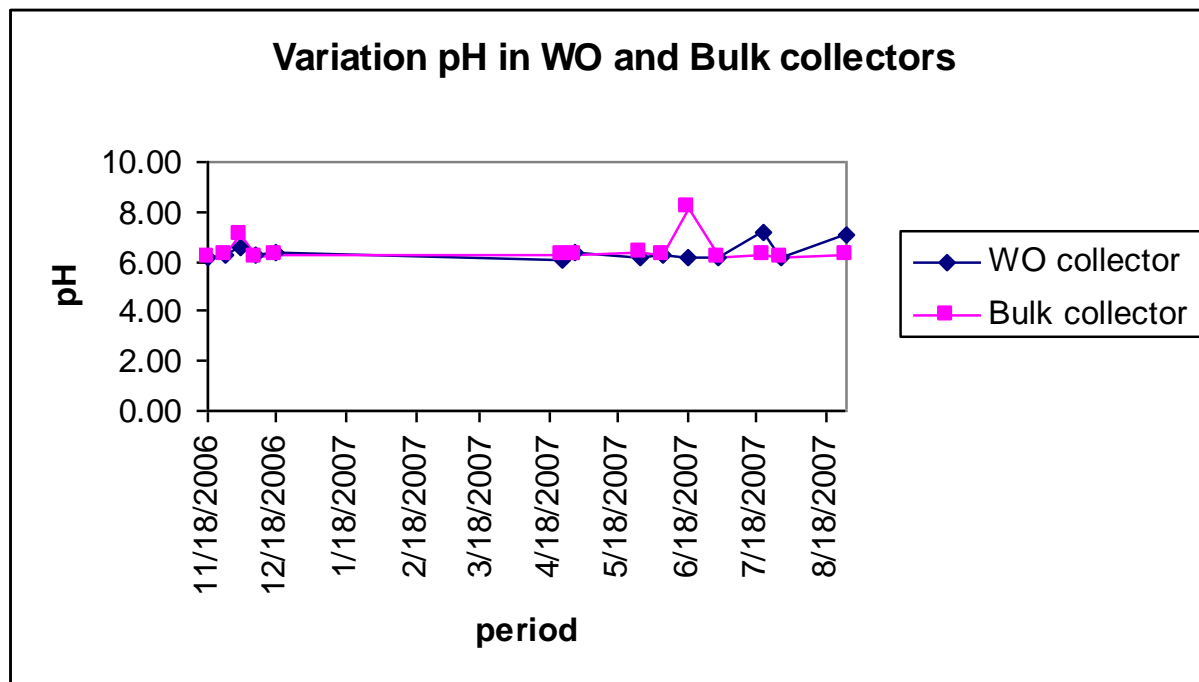
# VARIATION IN ELETRICAL CONDUCTIVITY (BULK)

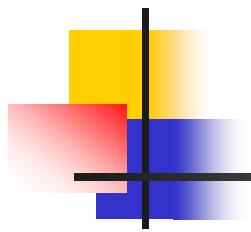


# VARIATION OF EC IN W/O AND BULK SAMPLES



# Variation of pH in WO and Bulk Collectors 2006/2007





**Thank You**